



**PRESSURE MEASUREMENT**  
**Pressure Gauge - Diaphragm Operated**  
**Series SCH - All stainless steel construction**

Data Sheet P SCH4

**Service Intended**

Suitable for aggressive gaseous and liquid media under extreme conditions. Diaphragm gauges are suitable for viscous, crystallising or polluting media. The design ensures resistance to vibration and protection against over pressures.

**Case Details**

Nominal Dia: 100 & 160mm  
 Material: Stainless steel 304.

**Bezel**

Type T: S/Steel bayonet lock, twist type - removable.  
 Material: Stainless steel 304

**Pressure Connections**

Material: Stainless steel 316.  
 Sizes : ½" BSP or NPT male or female threaded.  
 : Open flange on request.  
 Position: Radial bottom connection only.

**Diaphragm Flange Material & Dimensions**

Upper flange (gauge) : Stainless steel 316  
 Lower flange (process): Stainless steel 316  
 (Exotic material optional)  
 Ranges 4 kPa to 25 kPa : Flange Ø 160 mm  
 Ranges 40 kPa to 2500 kPa: Flange Ø 95mm  
 Gaskets: PTFE or Klingerit IT1000

**Measuring System**

Diaphragm with push rod principle.  
 Material: Stainless steel 316.  
 (Exotic Material or PTFE protection optional)

**Geared Movement**

Material: Clockwork brass or stainless steel.

**Pointer**

Collet: Aluminium or brass  
 Blade: Black aluminium

**Dial**

Material: Aluminium, white with black lettering.

**Window**

Instrument glass or plexiglass. (Plexiglass recommended for food applications)

**Weather Protection**

IP 65 Dust & weather proof.

**Working Pressure**

Steady : Full scale value  
 Fluctuating : 90% of full scale value  
 Short Period: 130% of full scale value  
 Over Pressure Safety: 5 x full scale value not exceeding 40 bar.

**Accuracy Class**

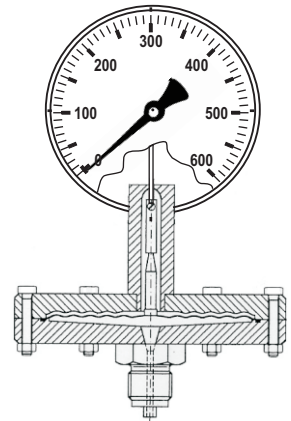
Class 1.6

**Operating Temperature**

Ambient: -20°C to + 60°C  
 Medium: + 100 °C  
 Error: 0,5% of fsd / 10°C above or below 20°C

**Optional Extras**

- Glycerine filling of case
- Calibration Certificate
- Customized scale plates ( customer logo, red line, etc )
- Special Dials, other than standard ( dual scale, bar, psi )
- Colour Coding of dial
- Drag pointer ( maximum set pointer )
- Micro adjustable pointer



For dimensional drawing see technical section

STANDARD PRESSURE RANGES					
Ranges	Figure Interval	Minor Graduations	Ranges	Figure Interval	Minor Graduations
<b>Pressure</b>			<b>Pressure</b>		
0/4 kPa	1	0.1	0/800 kPa	100	10
0/6 kPa	1	0.1	0/1000 kPa	200	20
0/10 kPa	2	0.2	0/1600 kPa	200	20
0/16 kPa	2	0.2	0/2500 kPa	500	50
0/25 kPa	5	0.5			
0/40 kPa	10	1	<b>Compound</b>		
0/60 kPa	10	1	-100/0/300 kPa	100	10
0/100 kPa	20	2	-100/0/500 kPa	100	10
0/160 kPa	20	2	-100/0/700 kPa	100	10
0/250 kPa	50	10	-100/0/900 kPa	200	20
0/400 kPa	100	10	-100/0/1500 kPa	500	50
0/600 kPa	100	10	-100/0/2400 kPa	500	50

Customized and other scales such as bar / psi / inHG etc. are available on request